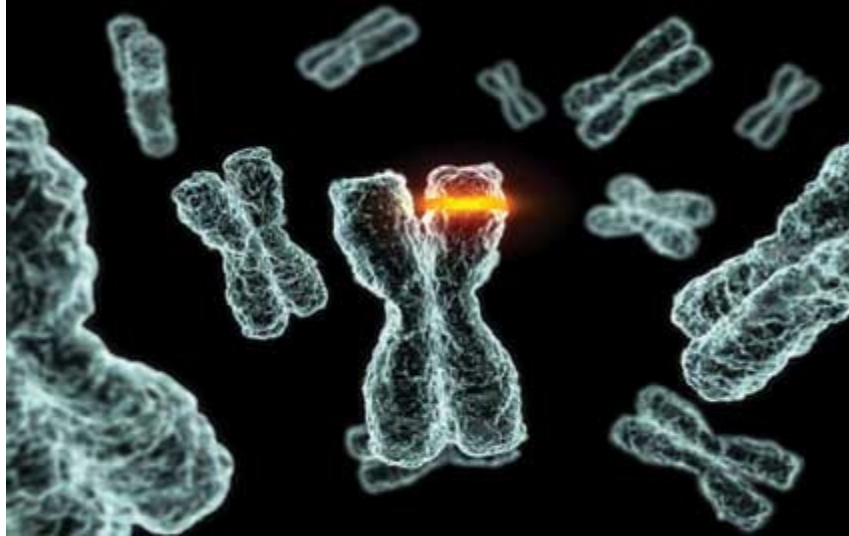


Human Chromosome II

By: Jeffrey D. Mason, C.Ht., M.A., and M.H.



Human chromosome II, has been cited by evolutionary theorists as proof positive, undeniable evidence of common ancestry between great apes (orangutan, gorilla, and chimpanzee), and human beings, due to the striking similarities of both number of markers on the chromosome and the overall appearance of the chromosome across the four different species. However, it cannot be over emphasized, there are significant differences as well.

Evolutionists will state most of the chromosomal differences among the four species involve inversions- or localities on the chromosomes that have been inverted, or swapped end to end. It should be noted; this is a relatively common occurrence among all species. In other words, some how, for evolutionists this is a big deal, and to them represents evidences of evolution because the chromosome patterns are merely inverted from one species to another.

This is exactly the point from the creationist standpoint, the fact that there are inversions, and these inversions make all the difference in the world between great apes and humans. Evolutionists claim because they are the same, but just arranged reversed or differently it

shows evolution, but it is precisely this different arrangement that distinguishes the differences from one species to another.

In addition we must not forget, inversions between differing animal genomes is a very common occurrence and therefore does not necessitate any sort of evidence for common ancestry. Just as the DNA information is due to coding of four specific proteins, which are the same proteins regardless of the species, their arrangements are different, in each species genetic make-up and here in is the difference from one species and that of another.

Though indels are also beginning to demonstrate a significant role upon the influences and differences between great apes and humans. It is not merely DNA alone. If we compare the genetic makeup between a banana and a human being, depending on what we are comparing, we can get estimations of as much a 60% similarity between our genetics and that of the banana! When it comes to human chromosome II, evolutionists believe it is strong evidence of a fusion event, and therefore also strong evidence for common ancestry. They claim it is hard to explain by any other mechanism.

The principle indications for this fusion event from great ape genes 2a and 2b are as follows:

1. These two great ape chromosomes can be shown, when laid end to end, to create a nearly identical banding structure to that of human chromosome II. Yet, note, this does not equate to an absolutely solid exact match. They are extremely similar, but they are not exactly identical, and this is an important point.
2. They claim remains can be seen of the sequence of the telomere at the ends of the chromosome and are also found in the middle of the human chromosome II, where according to their supposition the ancestral chromosomes 2a and 2b fused. Again it is merely speculated that this fusion even occurred at all. As there is such a thing as pseudo-transposition; or chromosomes possessing the appearance of a fusion, but in which no such event has occurred. Admittedly these are extremely rare. Thus the evidence, unless shown otherwise should be interpreted as a fusion event.

3. All the sequences in the pre-telomeric, telomeric, reverse telomeric sequencing are exactly what they would expect if a fusion occurred. In other words based on evolutionary prediction, this would be the physical evidence that evolution predicted would occur. However, it is important to note, the pre-telomeric, telomeric and reverse telomeric sequences of Human Chromosome II, though very similar with the large ape chromosomes are again not exactly matched in their sequencing arrangements: there are areas of significant difference as well.

Interestingly the prediction of such findings came after the findings, not before. And to my way of thinking that's a bit like predicting an event after the event was observed, and taking credit for predicting it.

In addition all human telomeres are vastly shorter than any of the great ape species, and this also includes the telomeres on human chromosome II; there are also differences in repetitive DNA elements on these telomeres.

According to Dr. Varki and Gagneux, both evolutionary geneticists, who compared the differences between large apes and humans, the differences between great apes and humans include, but are not entirely limited to, differences in both types and numbers of repetitive genomic DNA, transposable retroelements, distribution and numbers of endogenous retroviruses, the presence and extent of allelic polymorphisms, the rates and types of specific gene inactivation events, and even on the telomeres found on Human Chromosome 2 we see major gene sequence and expression differences, differences in gene duplications, differences in single nucleotide polymorphisms, as well as several differences in messenger RNA splicing variations.

4. According to evolutionists this telomeric region, and their after the fact prediction, occur in the middle of human chromosome II at the center referred to as the centromere.

5. And again, after the observed fact, they claim at the place on Human chromosome II we find remnants of the chimp 2a centromere. Since Human Chromosome 2 is in possession of two centromeres, one of which is deactivated. However, this extra, inactive centromere reveals nothing and there is no proof at present that it is the result of a remnant chimpanzee centromere. Evolutionists then may ask why human chromosome 2 would even have an additional inactive centromere? The answer is very simply, in rare cases in humans, it has been noted that “neocentromeres” can form at new sites on the chromosome. When this coupling occurs, the inactivation of the previous centromere will take place, Dicentric chromosomes, that is, chromosomes with two functional centromere will result in chromosome breakage during mitosis phase. In some unusual cases these neocentromeres have actually been observed to form spontaneously on fragmented chromosomes. Some of these new positions were euchromatic, lacking alpha satellite DNA altogether. So this little fact about chromosomes in general could easily explain the presents of a second, inactive centromere in human chromosome 2 without the extra, extrapolated need to assume that it is the result of a great ape remnant centromere from the chimpanzee.

6. Evolutionists insist this is proof of evolution from a common ancestor. However, The differences I’ve mentioned aside, the areas of similarity can just as easily serve as evidence of a common Designer, using common building materials. Evolutionists always seem to fall into this problem, stressing similarities while ignoring vast differences. A carpenter builds two different houses, using brick, stone, wood and similar materials in both houses, and both houses have different, yet similar blueprints and floor plans. The evolutionist notes the similarities, such as identical brick and stone, ECT, and determines it is the same house. Whereas, creationists see the similarities, but also note the vast differences as well, and conclude they are two different, houses, with a common builder, using common building materials.

Chromosomes are actually a type of carrying case harboring the far more important genes. Each gene is responsible for a single manifested trait of any particular individual within a species. The

outward appearance of a chromosome is far less important to differentiation, than are the genes that chromosome incases.

Therefore, outward similarities tell us very little, since two chromosomes of two entirely different and unrelated species can look very similar or even identical outwardly, yet the inward genes and how those genes express themselves may be completely different.

Therefore, though human chromosome II is very similar outwardly to the two smaller chromosomes of the great apes, specifically 2a and 2b, this is in no way proof of a common ancestor, and is just as likely to be seen with a common designer who uses the same general building materials throughout his creation.

I submit this is indeed, the fact of the case. Evidence we have to support this conclusion is the fact that fragmented remnants, which can be seen to also match identically with human chromosome II have also been found genetically in many species of cats and rats, not just great apes. This fact alone has forced evolutionists to have to make the assumed extrapolated claim that cats and rats are also our relations from an even more distant ancestor than the great apes.

However, the mere fact we find these remnants with identical chromosome markers with human chromosome II, is supportive of the idea of a common designer, using common building materials, and does not require speculation of more distant ancestry between cats, rats and humans.

Though seemingly unrelated, Human Y chromosome, which is vastly different from those of the great apes, including in size and so on, have also been found by evolutionary geneticists to possess fragmental remnants of the marsupials. This again, shows clearly, what evolutionists are actually observing in both Y chromosome and human chromosome 2 is simply representative of common building materials, and NOT a common ancestor. I mean, it must be asked of the evolutionist, which is it? Are we related to the great apes, or rats and cats, or marsupials? In addition, if these markers do show distant ancestry with marsupials, then how would evolution ever adequately explain the this fact, since according to their own "theory" humans

evolved in Africa and marsupials in Australia completely independent of one another. This is no small contradiction!

We need to also keep in mind the vast majority of cases where translocations have been seen; in humans it has been extremely detrimental to the gene pool. The carriers of such a chromosome may themselves be phenotypically normal. However, there is a significantly increased risk of unbalanced gametes, leading to miscarriages or abnormal offspring. Several forms of cancer, and most notably various forms of leukemia, infertility, Down's syndrome and similar chromosomal diseases have been undeniably linked to various forms of translocations of chromosomes.

This is not to say that such a chromosomal fusion did not take place. Evidence for a chromosome fusion in Human Chromosome II is present and overwhelming. However, it is only assumed by evolutionists this fusion is due to an end-to-end translocation of smaller large ape chromosomes. It is in their wordage, and I quote from one of their own evolutionary sites.

“Not only is this strong evidence for a fusion event, but it is also strong evidence for common ancestry; in fact, it is hard to explain by any other mechanism.”

But as another Creation apologist has pointed out, this is merely extrapolation beyond the evidence. He explains:

“The main basis for saying this appears to be the statement: "At the place where we would expect it on the human chromosome we find the remnants of the chimp 2a centromere". -- there is no label on it saying "I'm a chimp 2a centromere". What we find is the remnants of a centromere that is in the same place, relative to certain sequences, as the 2a centromere is in chimps. All this shows is that the ancestor chromosomes (i.e. before the fusion event) of current human chromosomes were closely analogous to chromosomes of apes, including chimps.

So the author claims we can rule out other accounts of human origins, but is unjustified in doing so. The reason for this logical mistake is that he/she has intertwined the evidence and the evolutionary

explanation so tightly, and seen that they fit so well, that the author cannot imagine another explanation would fit. In reality, the evidence fits a creationist explanation equally well--there is nothing contrived or tricky about what I have presented, and if evolutionary theory did not exist, there is nothing in this evidence that would make creationists think of common descent. The idea that humans originally had a complete set of chromosomes that correspond to ape chromosomes, rather than only 23 out of 24, does not shake creationist ideas one little bit. We already knew there was a vast amount of similarity between humans and primates both in terms of physical characteristics and genetic material and structure. It is a mistake of the evolutionary mindset to assume that observing similarities necessarily brings you to the conclusion of common descent. Taxonomy based on physical characteristics was already a very well established science when the idea of common descent came on the scene, and people from both the intelligent design and the creationists camps have no problem in understanding physical and genetic similarities that are not rooted in common descent -- that is, it is easy to think of perfectly adequate reasons why a designer (either an unknown intelligence in the case of ID, or God in the case of creationism) might have reused designs.”

The author above stated also pointed out that to make the statement:

“Not only is this strong evidence for a fusion event, but it is also strong evidence for common ancestry; in fact, it is hard to explain by any other mechanism”

presupposes evolution is a fact and this fusion is the result of the union of the chimpanzee chromosomes. However, if the Evolutionists would have stated their findings along these lines:

“The evidence that human chromosome 2 is the fusion of two chromosomes is overwhelming. The two chromosomes it appears to derive from are directly analogous to chromosomes that are found in apes.”

He goes on to state:

“Once you make this change, an explanation that agrees with creationist accounts of human ancestry just falls out. It would go

something like this: Humans were created in a separate creative event from the other primates, but with 24 chromosome pairs just like them. At some point early in human history, fusion of the chromosomes occurred to give us the 23 pairs we have now. All living humans are descended from those in which the fusion occurred.”

Indeed his argument is sound here, and agrees with all the observable science behind chromosome 2. It may be argued that the carrier of such a chromosome would not be able to reproduce as is often known to be the case with similar events that have been witnessed. However, this is not always the case, in rare situations reproduction and procreation is known to be able to continue even after such a fusion event. And in rare instances these translocations can take place without causing any discernable detrimental effects. The Evolutionist will also be forced to agree on this point. Otherwise, they will not only trespass against observed science, but would be hard pressed to explain how, exactly in their model, such a fusion could have been passed on to form homo-sapiens.

I think, what disturbs me the most regarding the articles I studied from evolutionary sites and papers, on human chromosome II, is that though far from scientifically being proved, all of them teach human chromosome II is a fusion of the two smaller great ape chromosomes, 2a and 2b, and state such as though it is a proven fact. In reality this is simply not the case.

In conclusion, Human chromosome II is no more evidence for human, Great ape common ancestry, as is a walking stick insect's identical appearance to a branch twig suggestive that the bug and the tree have a common ancestor. We cannot simply look at the similarities between different species, and say this proves this or that. We must also consider the many differences between them. And it is indeed, the differences, which literally make all the difference in the world between one kind of created thing and that of an entirely different kind.

Man and the great ape did not have a common ancestor, but we did have a common creator who used common building materials, and so we should expect to see similar and at times identical areas of

matching. But, we should also see areas of vast differences, and when we look, that is exactly what we actually see.

All living things are made of the same basic materials, but within the scope of this is wide variety and vast differences from these same identical basic materials. Everything has been made with these common materials, and is related not by a common ancestor, but by a common creator of all things.

In spite of evolutionist's stating that the common designer who uses common building materials will not work to explain human chromosome 2, given the fact that the supposed remnant markers of this same chromosome are also seen to match cats and rats, and the fact that genetic markers in human Y chromosome are also supposedly in kangaroos, opossums and other marsupials, I would have to say the creationist argument of common design with common building materials only increases in validity. And since dual centromeres have been known to occur with one always deactivated as a result in humans, this finding does not in any way require that additional great ape genomic materials be lent in order to be present. God has firmly declared that each kind would produce after its own kind. We have never witnessed, in fossil record or living world one kind of animal transforming into an entirely different animal. All that can actually be observed both presently and forensically testify to the truth of God's word.

It is only when men wish to run from God they will seek whatever, proofs they can, and justify themselves through assumption, speculation and extrapolate meanings and claims far beyond what the data by itself actually permits.

There are many things with similar appearances in nature, both on the macro and micro levels. To understand the true meaning behind what we witness in science or through observation, we must not merely embrace the similarities, but also take account of the notable differences. It is only then, that science will gain a truly balanced view, and men who claim there is no evidence for God, may perhaps through the voice of their own investigations come to hear a still small voice, that says here I am, do you see me yet...I am HE...I am the maker of the things you observe, I am God. Or these men will

harden their heart, and deny the evidences that would give them the proof of God they claim they wish to see; and in so doing, fail to consider those evidences and forever be learning, yet, never be able to come into the knowledge of the truth!

REFERENCES:

Chromosome 2 (Human); www.wikipedia.org

Lindsey, Don: Comparison of the Human and Great Ape Chromosomes as Evidence for Common Ancestry.

Chromosomal and Genetic Abnormalities: The Merck Manual

Human Chromosome 2: University of Washington, Medical Library

Warren, Nelson J: Human/chimp DNA similarity continues to

Decrease: counting indels. Answers In Genesis

Dewitt, David, PhD.: Chimp-human hybridization: two of a kind or two Different kinds? Answers In Genesis

lukeplant.me.uk/blog. Christianity Apologetics